

# 8542TBF PARTS MANUAL

Subject to change without notice.



[www.trackstackuk.com](http://www.trackstackuk.com)

*Reaching New Heights*

## **FOREWORD/RESERVATION OF RIGHTS:**

While all the information, illustrations and specifications in this manual are based on the latest information available at the time of publication, some variations do exist between machine specifications. Therefore, we cannot guarantee that all of the information contained in this manual is 100% accurate.

Future updated issues of this manual or manuals belonging to other Tesab equipment, will not be specific to all machines. Tesab Engineering reserve the right to change the specification of their equipment and therefore reserve the right to alter any information contained in this manual without prior notice.

## **COPYRIGHT:**

No copies or any form of reproductions may be made of all, or any part, of this manual without prior written consent of **TESAB ENGINEERING Ltd.** This manual, complete or in part, must not be loaned or given to a third party.

Additional copies of this manual are readily available, however, a charge may be payable to cover printing and administrative costs.

## 1.0 SPARE PART ORDERING INFORMATION.

To ensure that you receive the parts you require without delay we will require the following information at the time of order:

Your company name and delivery address.  
Your contact name and number.  
The machine serial number (see below for details).  
The machine model number (see below for details).  
The part number.  
The part description.  
The quantity required.

**Note: Ensure that you order all the required parts such as bolts and washers etc. Do not assume that such items will automatically be sent with main components.**

An order form has been provided on the next page. Please use it to order your parts. If you require individual order forms please contact the Tesab spare parts department.

To order spares please contact:

**TESAB ENG. Ltd.**  
**Unit 9,**  
**Gortrush Industrial Estate,**  
**Omagh,**  
**Co Tyrone,**  
**N. Ireland BT78 5EJ**

**Tel: +44 (0) 2882252781**

**Fax: +44 (0) 2882252801**

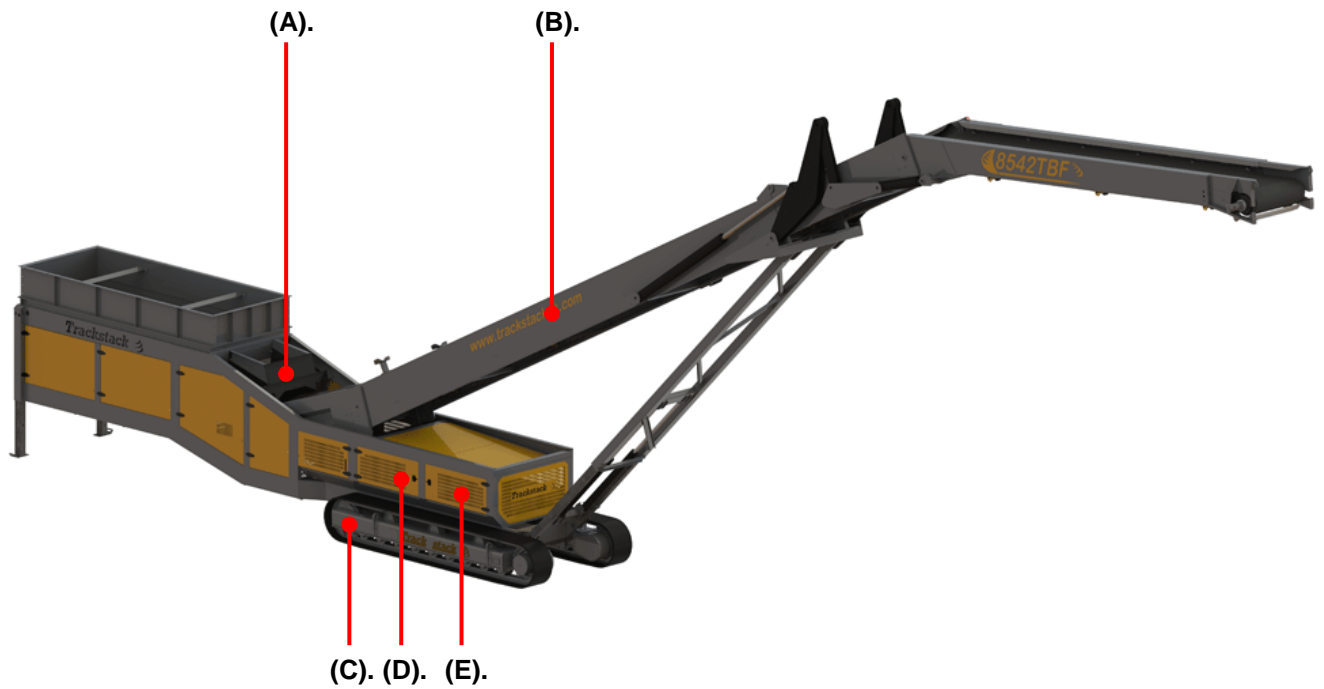
**Email: [paul@tesab.co.uk](mailto:paul@tesab.co.uk)**

**Web: [www.tesab.com](http://www.tesab.com)**



## **2.0 PARTS ILLUSTRATION.**

To make it easier to find the parts you are looking for, we have divided the machine into seven main assemblies. Details of these assemblies are given below.



- (A). Feeder Conveyor – see page 6 – 7
- (B). Product Conveyor – see page 8 – 9.
- (C). Tracks – see page 10 – 12
- (D). Hydraulic System – see page 13.
- (E). Engine – see page 14.
- (F). Miscellaneous Components – see page 15.

**2.1 FEEDER CONVEYOR PARTS:**

<b>Part No.</b>	<b>Part Description.</b>	<b>Qty</b>	<b>Part Photo.</b>
01-06-21003	Hydraulic Drive – Reduction Gearbox	1	
01-05-00108	Hydraulic Drive – Reduction Gearbox Motor	1	
02-14-12801	Drive Drum	1	
02-32-00701	Drive Drum Flange Bearing	1	
02-11-1280	Idle Drum	1	
02-34-00701	Idle Drum Plumber Block Bearing	2	
06-20-1200	Conveyor Belt	1	
06-25-0001	Idle Roller - Wing	30	
06-30-1200	Idle Roller - Impact	30	
06-15-5042	Return Roller - Rubber Disc	2	
06-65-93001	Skirting Rubber – Side	2	
06-65-93002	Skirting Rubber – End	1	
06-65-93003	Skirting Rubber – Drive Drum – ‘J’ Rubber	2	



## **2.2 PRODUCT CONVEYOR PARTS:**

<b>Part No.</b>	<b>Part Description.</b>	<b>Qty</b>	<b>Part Photo.</b>
01-06-21002	Hydraulic Drive – Reduction Gearbox	1	
01-05-0075	Hydraulic Drive – Reduction Gearbox Motor	1	
02-14-36113INT	Drive Drum	1	
02-32-0080	Drive Drum Flange Bearing	1	
02-11-27113	Idle Drum	1	
02-36-0060	Idle Drum Take-Up Bearing	2	
02-11-11311	Upper Snub Drum	2	
02-32-00501	Upper Snub Drum Bearing	4	
02-11-11317	Lower Snub Drum	1	
02-32-00701	Lower Snub Drum Bearing	2	
	Conveyor Belt - Chevron	1	
06-25-0009	Idle Roller - Centre	23	
06-25-0001	Idle Roller - Wing	46	

**2.2 PRODUCT CONVEYOR PARTS CONTINUED:**

Part No.	Part Description.	Qty	Part Photo.
06-15-5042	Return Roller - Rubber Disc	8	
06-65-93006	Skirting Rubber – Lower Fixed Section – Side	2	
06-65-93008	Skirting Rubber – Lower Tilt Section – Side	2	
06-65-93009	Skirting Rubber – Middle Fixed Section – Side	2	
06-65-93010	Skirting Rubber – Top Tilt Section – Side	2	
06-65-93007	Skirting Rubber – BTM End – Rear	3	
06-65-94004	Belt Scraper – ‘V’ Scraper – Middle Section	2	
06-65-90010	Belt Scraper – ‘V’ Scraper – Idle Drum	1	
01-80-0052	Folding Ram	2	
01-80-0069	Tilting Ram	2	

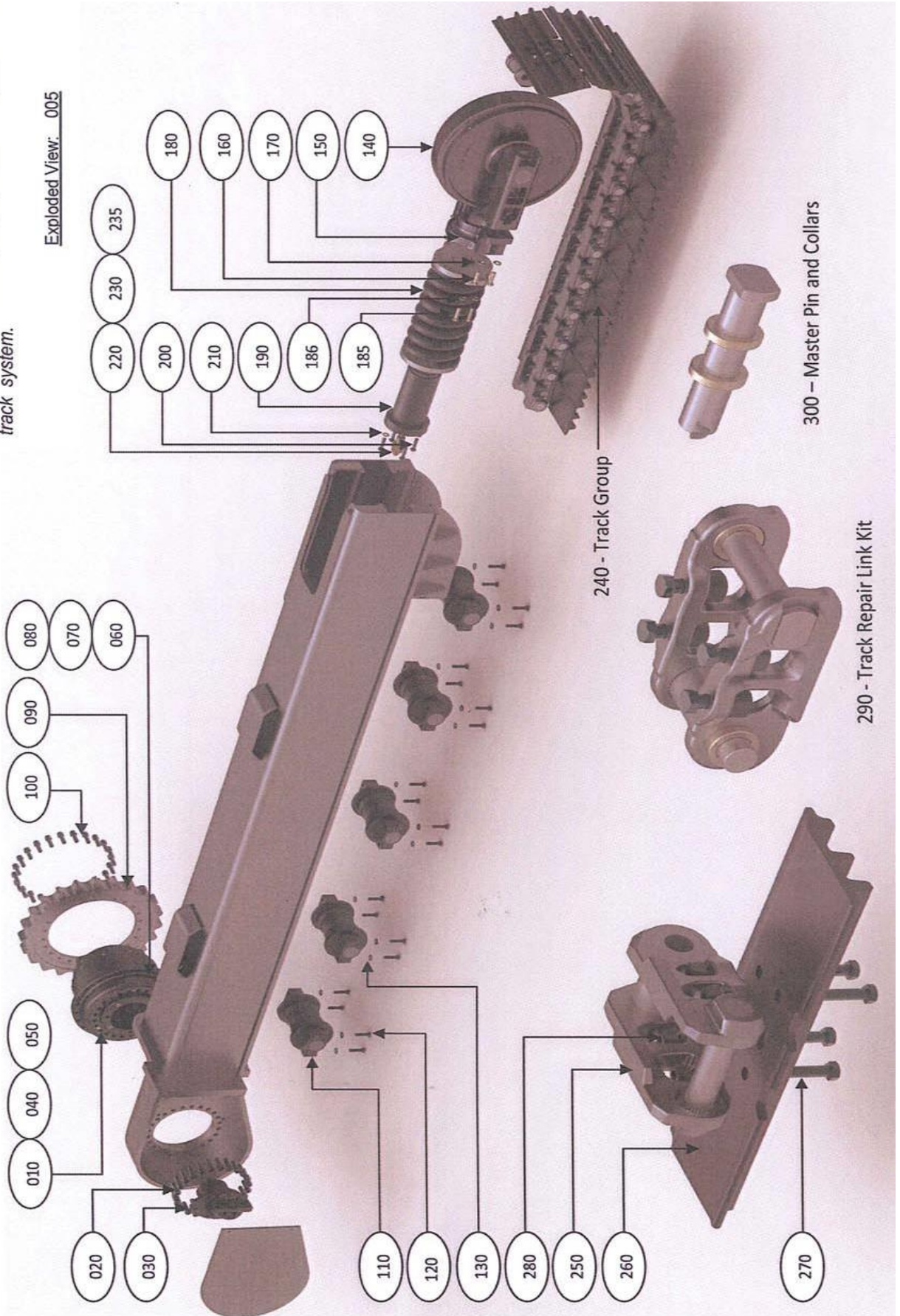
## 2.3 TRACKS ASSEMBLY (IF STRICKLAND TRACKS ARE FITTED)

**IMPORTANT:** Before ordering spare parts for the crawler tracks check which brand of tracks have been fitted to your machine and use the associated parts illustration and numbers.

### Parts List and Hydraulic Specifications

Please note this exploded view is for representation purposes only. This may slightly differ from your actual track system.

#### Parts Breakdown



**2.3 TRACKS ASSEMBLY PARTS CONTINUED.....**

**Parts List and Hydraulic Specifications**

**DK404A-JC255JA-DT12**

**1. Parts List for Track System**

Item No.	Part No.	Description	Qty per Track	Qty per Pair
010	FDM784-JC155JA	Track Drive Gearbox with Hydraulic Motor	1	2
020	BHM520-250065-12-FS	Socket Head Capscrew (Gearbox to Track Frame)-Torque to 675 Nm (499 lbs/ft)	13	26
	BHM520-250045-12-FS	Socket Head Capscrew (Gearbox to Track Frame)-Torque to 675 Nm (499 lbs/ft)	3	6
030	MOT0JA-FDMOTOR	Fixed Displacement Motor	1	2
040	FDG RRTD-DRNPLG	Oil Fill/Drain Plug	2	4
050	POL 00280W/90-0	Gear oil SAE 80W/90	3.0L	6.0L
060	N/A	Brake Release Stand-off Pipe	N/A	N/A
070	FMVA04-A04MM	Brake Release Adaptor	1	2
080	FMVA14-DBS04	Brake Release Seal	1	2
090	SPA 200-DKHB23	Drive Sprocket	1	2
100	BHM516-150055-12-PS	Socket Head Capscrew (Sprocket to Gearbox) – Torque to 347 Nm (257 lbs/ft)	20	40
110	LRG 000SF60B-4	Single Flanged Lower Roller	9	18
120	BHM 016200065	Hex Head Bolt (Roller to Track Frame) -Torque to 289 Nm (214 lbs/ft)	36	72
130	WFH 019-2	Hardened Washer	36	72
140	IDG 5061-5	Front Idler Group	1	2
150	IDY 160-5061-06	Idler Yoke	1	2
160	BHM012-175040-88-FS	Hex Head Bolt (Yoke to Idler) - Torque to 84 Nm (62 lbs/ft)	4	8
170	WSH 023-HD-3	Spring Washer	4	8
180	RSA 160-5061-06	Spring Recoil	1	2
185	BHM 016200050	Hex Head Bolt (Recoil to Yoke) –Torque to 289 Nm (214 lbs/ft)	2	4
186	WSH 015-2	Spring Washer	2	4
190	TTA 160-5061-E	Grease Tensioner	1	2
200	BHM012-175050-88-PS	Hex Head Bolt (Tensioner to Track Frame) - Torque to 84 Nm (62 lbs/ft)	2	4
210	WSH 023HD-3	Spring Washer	2	4
220	IDM 889-2	Tensioner Grease Fitting	1	2
230	IDM 888-6	Gasket for Grease Fitting	1	2
235	TLG 080-9	Grease Gun Adaptor	N/A	N/A
240	TG-DKS-61-K-400T-SS	Track Group	1	2
250	TCA 04561-0	Track Link Assembly	1	2
260	TBG 510400916-0	Track Shoe (400mm Wide Triple Grouser)	61	122
270	TSB 014-48	Track Shoe Bolt -Torque to 257 Nm (190 lbs/ft)	244	488
280	TSN 014-0	Track Shoe Nut	244	488
290	TRL 045-DK-XXXX-D	Track Repair Link Kit	N/A	N/A
300	MPG 045-DK-XXXX-D	Master Pin and Collars	1	2

Note: For more details on Parts Breakdown Please refer to EXPLODED VIEW: 005



Tel: +44 (0) 28 82252781

8542TBF - P11.

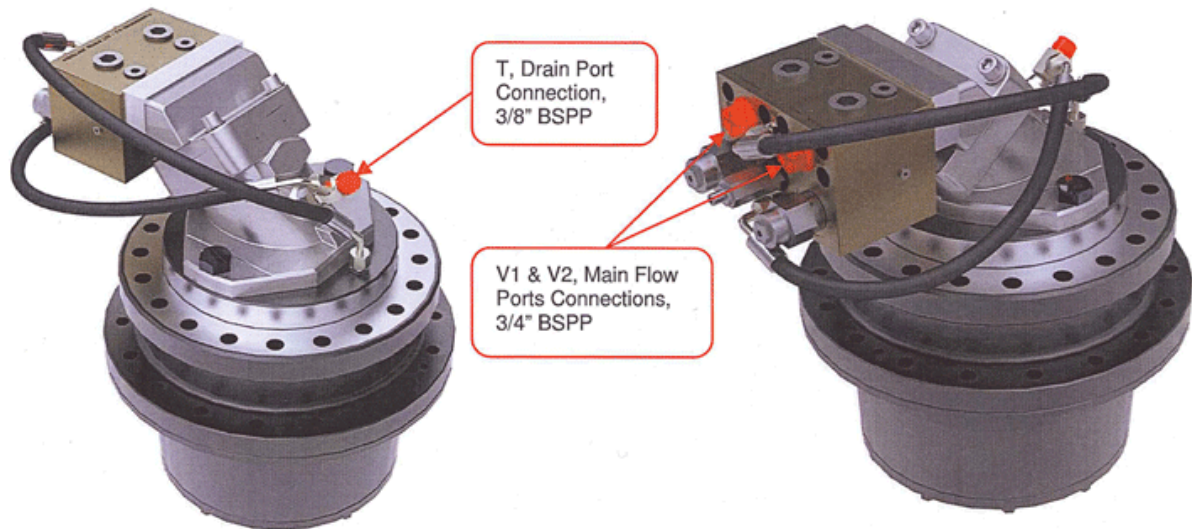
## 2.3 TRACKS ASSEMBLY PARTS CONTINUED.....

### 2. Hydraulic Hose and Fitting Kit

Item No.	Part No.	Description	Qty per Track	Qty per Pair
510	FMV063-8F5952	Motion Control / Brake Release Valve Block	1	2
520	FMV063-8F5267-SPACE	A2FE63 Valve Transfer Plate	1	2
530	BHM510-150120-12-PS	Socket Head Capscrew (Valve block/Transfer Plate to Motor Flange)	8	16
540	FMVP63-06008057-HOS	Hose And Fitting Kit (Includes all hoses and fittings shown below)	1	

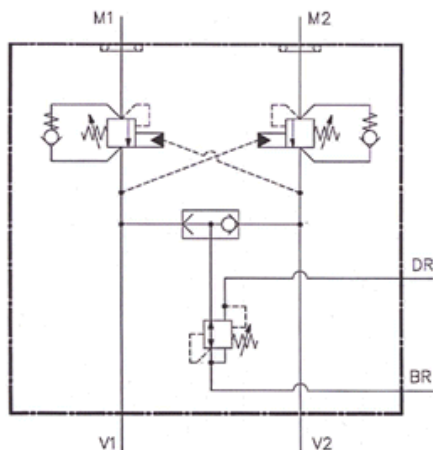
### 3. Required Connections

Highlighted below are main connections required to operate the track drive.



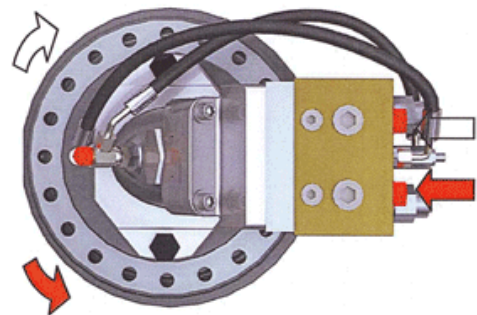
### 4. Hydraulic Schematic

Below is the general hydraulic circuit diagram for the track drive gearbox and fixed displacement motor combination with a motion control and brake release valve fitted.



### 5. Direction of Rotation

When connecting to the track drives, it is important to check that the direction of rotation corresponds to forwards movement of the machine, when the drives are positioned at the rear of the machine.



The diagram above shows the direction of rotation of the track drive in relation to the input flow to motor.







**2.4 ENGINE PARTS:**

Part No.	Part Description.	Qty	Part Photo.
321-2411	Air Filter - Outer Element	1	
321-2412	Air Filter – Inner Element	1	
299-8299	Fuel Filter	2	
7W-2326	Oil Filter	1	
308-7298	Water Trap Filter	1	
8542TBF Exhaust	Exhaust	1	
313 - 1226	Exhaust Reducer	1	

**2.5 HYDRAULIC SYSTEM PARTS:**

Part No.	Part Description.	Qty	Part Photo.
01-02-005151C	Main Hydraulic Pump - Tandem	1	
01-01-0033A	Aux Hydraulic Pump - Single	1	
01-15-4110	Return Line Filter (complete with element)	2	
01-15-4110E	Return Line Filter - Element	2	
01-15-1326	Suction Line Filter	2	
01-20-0233	Hydraulic Tank Temp Gauge	1	
01-25-5515	Hydraulic Tank Filler Cap (complete with strainer)	1	
01-80-0071	Jacking Leg Ram	2	
01-80-0052	Telescopic Ram - Front	2	
01-96-61912	Hydraulic Oil Cooler (complete with single fan)	1	
01-11-SD11/5	5 Bank Control Valve	1	
01-11-SD14/1	1 Bank Control Valve		
01-10-0200	Webtec Flow Control Valve		

**2.6 MISCELLANEOUS PARTS:**

Part No.	Part Description.	Qty	Part Photo.
01-25-6760	Diesel Tank – Filler Cap	1	
01-20-0213	Diesel Tank – Level Gauge	1	
40-20-1442	Tracks – Grease Gun Fitting	1	
8542TBF- Doglead	Doglead (complete with control box, lead & connector)	1	
60-10-1312	Doglead Connector (Female connection)	1	
60-65-1166	Emergency Stop Box	2	

# END OF MANUAL